



Bluevibe Sync v1.4 – Manual

Table of Contents

Introduction.....	3
1.1 Installing “Bluevibe Sync” on your computer.....	4
2.1 Synchronization Panel.....	6
2.1.1 Bundle Selection area.....	6
2.1.2 Update Hotspot button.....	6
2.1.3 Export statistics button.....	6
2.2 Hotspot Status.....	7
2.2.1 Connected/Disconnected indicator.....	7
2.2.2 Basic statistics generation button.....	7
2.2.3 Hotspot status indicator.....	7
2.2.4 Hotspot mac address indicator.....	7
2.2.5 Hotspot version indicator.....	8
2.2.6 Hotspot local time.....	8
2.2.7 Connected bluetooth modules indicator.....	8
2.2.8 Running campaigns indicator.....	8
3.1 Manual push.....	9
3.2 Master reset.....	10
3.3 Additional Hotspot information.....	10

Introduction

"**Bluevibe Sync**" is a lightweight application. It's main purpose is to provide an easy way to update your **standalone Bluevibe Hotspot(s)** and retrieve statistics from them. Apart from basic functionality there are many other features that "Bluevibe Sync" offers, that allow you to manage many functions of your Hotspot(s).

In this document all the basic and advanced features of the application are presented.

Note: *If you are just looking for a quick "step by step" guide to synchronize your hotspot, check the "**Bluevibe Sync Quick Start guide**".*

The "Bluevibe Sync" application can be connected to **one** standalone hotspot at a time. It is designed to minimize the time needed to update a hotspot and retrieve statistics back from it.

In installations with multiple standalone hotspots installed over a large area (i.e. a city), the amount of time spent by the person that updates the hotspots on each single one, is crucial. Minimizing this time saves on maintenance costs and maximizes the availability of your Hotspots.

1. Install the “Bluevibe Sync” application

Note: You only need to perform this step once.

In order to update your hotspot, you need to connect it to a PC (or Laptop), using the **network cable that came in the box with your Bluevibe Hotspot** (if you are using a different cable, please ensure it is a cross cable). Synchronization is done using the “Bluevibe Sync” application.

The application comes in the CD that accompanies your Bluevibe Hotspot. In order to use the “Bluevibe Sync” application you must install it on the PC you want to use for the synchronization process (typically a laptop).

1.1 Installing “Bluevibe Sync” on your computer

1. Insert the Bluevibe CD into your computer's CD-Rom drive.
2. On the window that will open in a few seconds, select the “Install Bluevibe Sync” button. (If no window appears, please ensure you have enabled the 'Autorun' feature in your Operating System or double-click on the CD-Rom drive on “My Computer”).
3. You will be asked to save the installation program. Click 'Yes' and then double-click on the installation program(from the folder it was saved)
4. Follow the on-screen instructions of the installation wizard.
5. When the installation is finished an icon with the Bluevibe logo will appear on your desktop. You can start the Bluevibe Sync application by double-clicking on the Bluevibe icon. Alternatively you can run Bluevibe Sync from the “Windows Start Menu”.

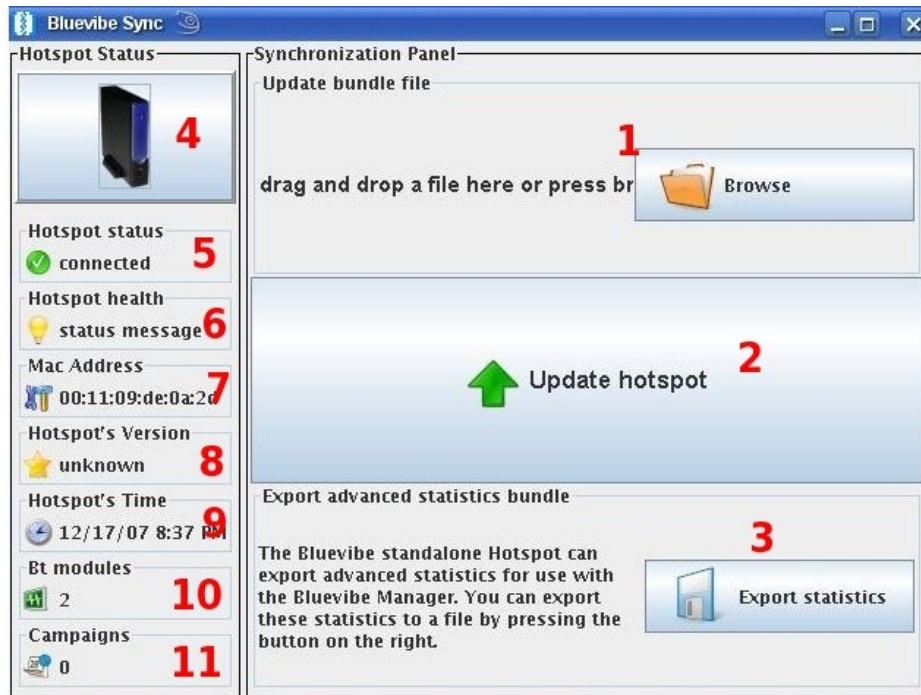


Illustration 1: Main screen. Synchronization Panel (left), Hotspot Status (right).

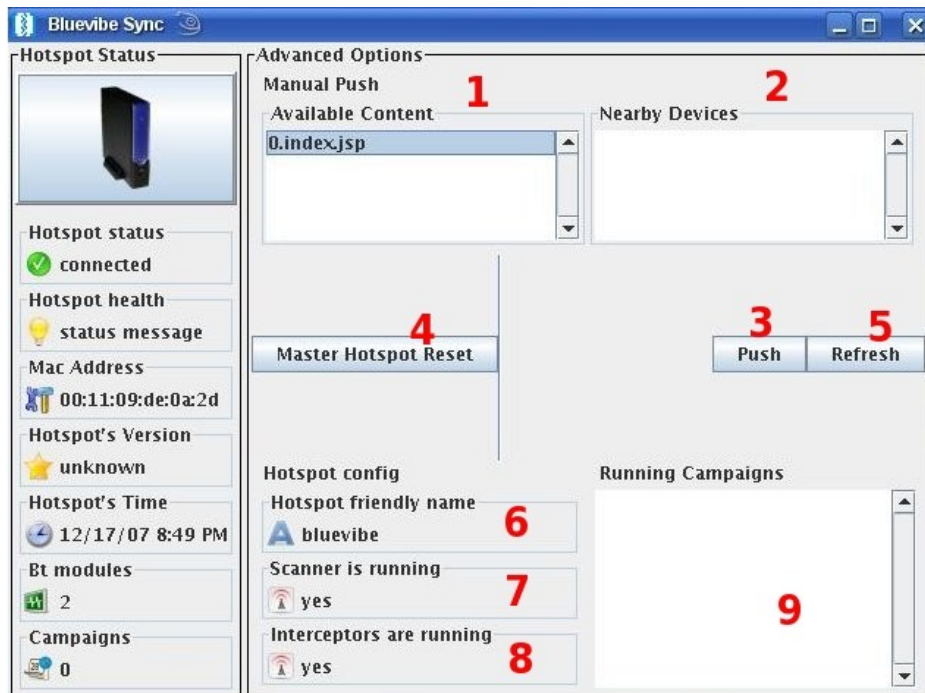


Illustration 2: Bluevibe sync Advanced Options. You can toggle between basic and advanced mode by pressing F12.

2. Basic functions

On illustration 1 you can see the main screen of the "Bluevibe Sync" application. It is divided in two parts. On the left there is the "**Synchronization Panel**" and on the right there is the "**Hotspot Status**".

2.1 Synchronization Panel

All the basic functions are located on the "Synchronization Panel" and are marked with numbers **1,2** and **3**.

2.1.1 Bundle Selection area

Marked with number **1** on illustration 1, is the area where you can 'drag & drop' your update bundle created using the "**Bluevibe Manager**". Alternatively you may use the "Browse" button to select the file from your disk.

2.1.2 Update Hotspot button

Marked with number **2** on illustration 1, is the "**Update Hotspot**" button. Clicking on this button will synchronize your hotspot with the update bundle file, you have selected on the previous step.

***Note:** Updating the hotspot can take up to a couple of minutes to complete depending on the size of data transmitted.*

2.1.3 Export statistics button

Marked with number **3** on illustration 1, is the "**export statistics**" button. Every standalone Bluevibe hotspot, gathers a large number of statistics, about the devices discovered by it, as well as the services used and the content pushed to nearby devices.

These statistics can be exported and then uploaded back to the "**Bluevibe Manager**" for further analysis.

***Note:** Uploading advanced statistics to the Bluevibe Manager is a subscription based service.*

By clicking on this button your will be requested to select a destination folder and filename for the exported statistics.

For more information on the advanced statistics function of the standalone hotspots please do not hesitate to contact us.

Note: *Exporting the advanced statistics file can take up to a couple of minutes to complete depending on the size of data gathered by the hotspot since the last statistics export.*

2.2 Hotspot Status

The “Bluevibe Sync” application also serves as a way to monitor the health of your hotspots. The “**Hotspot Status**” area on the main screen of the application (shown in illustration 1), is used for displaying various info about the hotspot that the application is currently connected to.

2.2.1 Connected/Disconnected indicator

While the application is running it always tries to connect to the hotspot (it makes requests to ip/port: 10.1.0.1 / 8080). When it is connected with the hotspot the indicator on number **5** of illustration 1 will read “connected” and have a “green tick” icon.

2.2.2 Basic statistics generation button

The standalone bluevibe hotspot can produce basic usage statistics in html format. By pressing the “Hotspot” button (number **4** of illustration 1) you can request a report from a given time in the past until now.

2.2.3 Hotspot status indicator

On number **6** of illustration 1 there is the hotspot health indicator. If there is an error or malfunction on the hotspot, the indicator will show there is a message. Double-clicking on the indicator will open a dialog box with the error message.

2.2.4 Hotspot mac address indicator

It is useful to know the mac address of the Hotspot you are connected to,

especially in large installations. On the indicator with number **7** on illustration 1 the mac address of the connected hotspot is displayed.

2.2.5 Hotspot version indicator

The firmware version of the connected Bluevibe Hotspot is displayed on indicator with number **8** on illustration 1.

2.2.6 Hotspot local time

The statistics that the hotspot generates, as well as the timing of the campaigns that run on it **depends** on the correct time set on its internal clock. The Hotspot date/time is displayed on indicator with number **9** on illustration 1. If the time displayed on that indicator is not the correct, you can set it to the current time of your computer, by double-clicking on that indicator.

Note: *Make sure the computer/laptop that runs the "Bluevibe Sync" application has the correct time set.*

Updating the Hotspot's time can take several seconds and will cause the hotspot to soft-restart.

2.2.7 Connected bluetooth modules indicator

The number of active bluetooth modules (bluetooth antennas) connected on the hotspot is displayed on indicator with number **10** of illustration 1.

In case the number displayed is different than the number of bluetooth modules actually connected to the standalone Bluevibe Hotspot, there is a hardware problem with one of the Bluetooth modules. In that case you should contact the Bluevibe support team.

2.2.8 Running campaigns indicator

The number of running campaigns on the Hotspot is displayed on indicator with number **11** of illustration 1.

3. Advanced functions

Beyond the basic *synchronization* functionality of the “Bluevibe sync” application covered on paragraph 2.1 and the *Hotspot status* functionality explained in paragraph 2.2, the application also has some advanced functions that can be used for maintenance.

To access the advanced functions, the user must press the button “F12” on the computer's keyboard. Pressing “F12” again will take the application back from the advanced to the basic menu (the “Synchronization Panel”).

Note: *In order to access the advanced functionality, the application must be connected to a hotspot. Pressing “F12” while the indicator **5** on illustration 1 reads “not connected” will have no effect.*

The advanced functionality screen is shown on illustration 2. The right part of the screen with the “Hotspot status” remains the same on both modes.

3.1 Manual push

The advanced mode can be used to manually push content to nearby devices. The available content inside the hotspot is shown with the number **1** on illustration 2. In order to push a file to a device, you can select the content from the list with number **1**, select the device from the “Nearby Devices” (indicated with number **2** on illustration 2) and press the “Push” button indicated with number **3**.

Note: *The information on the advanced panel's lists (i.e Nearby devices list) is not automatically refreshed. You need to press the “Refresh” button (indicated with number **5** on illustration 2).*

3.2 Master reset

In some cases you might need to reset the hotspot to its factory settings. **Warning!** Doing so will **permanently delete** all statistics (user data, push history etc) saved up to that point and all campaigns and content stored inside the hotspot.

You can master reset the hotspot by pressing the "Master Hotspot Reset" button on the Advanced Options panel, indicated by number **4** on illustration 2.

Note: A master reset can take a couple of minutes to complete.

3.3 Additional Hotspot information

The hotspot's friendly name is set by the last update bundle file uploaded on the hotspot and is displayed on indicator number **6** of illustration 2.

On indicator with number **7** the status of the "Scanner" is displayed. The scanner is an internal process of the Hotspot that periodically checks for nearby bluetooth devices (i.e. mobile phones). If this service is not running then the push services will not function.

On indicator with number **8** of illustration 2 the "Interceptors" status is displayed. The interceptors are internal processes of the Hotspot that handle interactive services (i.e. Bluevibe Browser services). If the interceptors are not running, the Hotspot will not serve any interactive services.

Note: *The scanner and the interceptors operation can be controlled from the "Bluevibe Manager" on the Hotspot configuration tab. This functionality is available for special deployments and should be left to defaults for simple installations.*

On indicator with number **9** of illustration 2, a list of all the campaigns in the hotspot is displayed.